

**ALASKA DIVISION OF HOMELAND SECURITY &
EMERGENCY MANAGEMENT**
SITUATION REPORT 24-061 • March 1, 2024



Toll-Free 1.800.478.2337

Anchorage Area 907.428.7000

SEOC 907.428.7100

| | | |
|--|---|---|
| <p><u>SEOC Preparedness Level</u> Level 1 – Routine Operations.</p> | <p align="center">http://ready.alaska.gov</p> | <p><u>National Terrorism Advisory System:</u> Read the NTAS Bulletin here</p> |
| <p>Maritime Security (MARSEC) Level:1- Minimum Appropriate Security Measures</p> | <p>WHO Novel Coronavirus Pandemic (COVID-19): 2019 Novel Coronavirus</p> | <p><u>Alaska Military Installation Force Protection Level:</u> FPCON Bravo</p> |

(Significant changes from previous situation reports are red.)

Significant Issues:

Kotzebue – Frozen Water Lines

SEOC continues to monitor and support the city and borough of Kotzebue. A team from DHS&EM disaster assistance will deploy to Kotzebue next week to assist the community.

Quinhagak Power Outage Disaster

The State Individual Assistance application hotline and website are open for Quinhagak residents at <https://www.ready.alaska.gov/Recovery/IA> or by phone at 1 (844) 445-7131. The deadline to apply for State Individual Assistance is March 2, 2024.

State of Alaska Department of Health (DOH)

The DOH stands ready to assist with all aspects of public health and, in the event of a public health emergency, is supported by the SEOC and other state departments as required.

For current information, see: <https://health.alaska.gov/dph/Pages/default.aspx>
<https://health.alaska.gov/dph/Emergency/Pages/prepared/default.aspx>

NTAS Bulletin

The U.S. Department of Homeland Security issued an updated National Terrorism Advisory Bulletin on May 24, 2023. The current and expired bulletins can be viewed at the below link.

<https://www.dhs.gov/national-terrorism-advisory-system>

Travel Alerts and Conditions

Richardson Highway Closed MP 19-46.

For current driving conditions, dial 511 or visit: <https://511.alaska.gov/>

Barry Arm Landslide / Tsunami Risk

For the latest information on the Barry Arm Landslide and Tsunami risk, click here:

<https://dggs.alaska.gov/hazards/barry-arm-landslide.html>

Earthquakes

United States Geological Service (USGS) Earthquake Information: <http://earthquake.usgs.gov/>

National Tsunami Warning Center: <http://tsunami.gov/>

Alaska Volcanoes

Great Sitkin Alert Level: **Watch** and Aviation Color Code: **Orange**

Kanaga Alert Level **Advisory** and Aviation Color Code: **Yellow**

Shishaldin Alert Level: **Watch** and Aviation Color Code: **Yellow**

Gareloi Alert Level: **Advisory** and Aviation Color: **Yellow**

For Alaska Volcano updates, go to: <https://www.avo.alaska.edu/>

Air Quality Index (AQI) Advisories

For the most up-to-date Air Quality Index Advisories:

<http://dec.alaska.gov/Applications/Air/airtoolsweb/Home/Index>

Spills of Oil and Hazardous Substances

The Alaska Division of Environmental Conservation (ADEC) Spill Prevention and Response page is located at:

<https://dec.alaska.gov/spar/>

Alaska Cyber Security Information

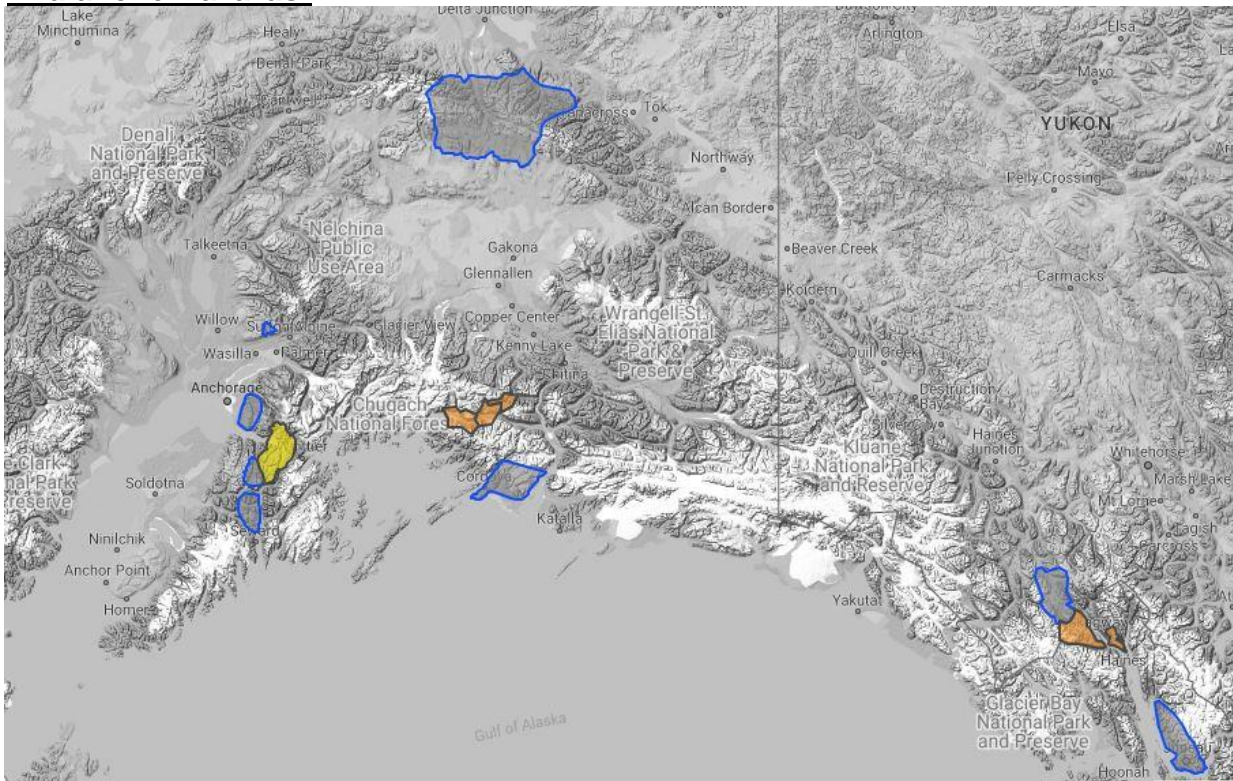
State Employees may sign up for cybersecurity notifications and alerts at

<https://oit.alaska.gov/security>

Cybersecurity and Infrastructure Security Agency (CISA)-Cybersecurity Services and Tools:

www.cisa.gov/free-cybersecurity-services-and-tools

Avalanche Hazards:



Travel in avalanche terrain is not recommended. Avoid being on or beneath all steep slopes.

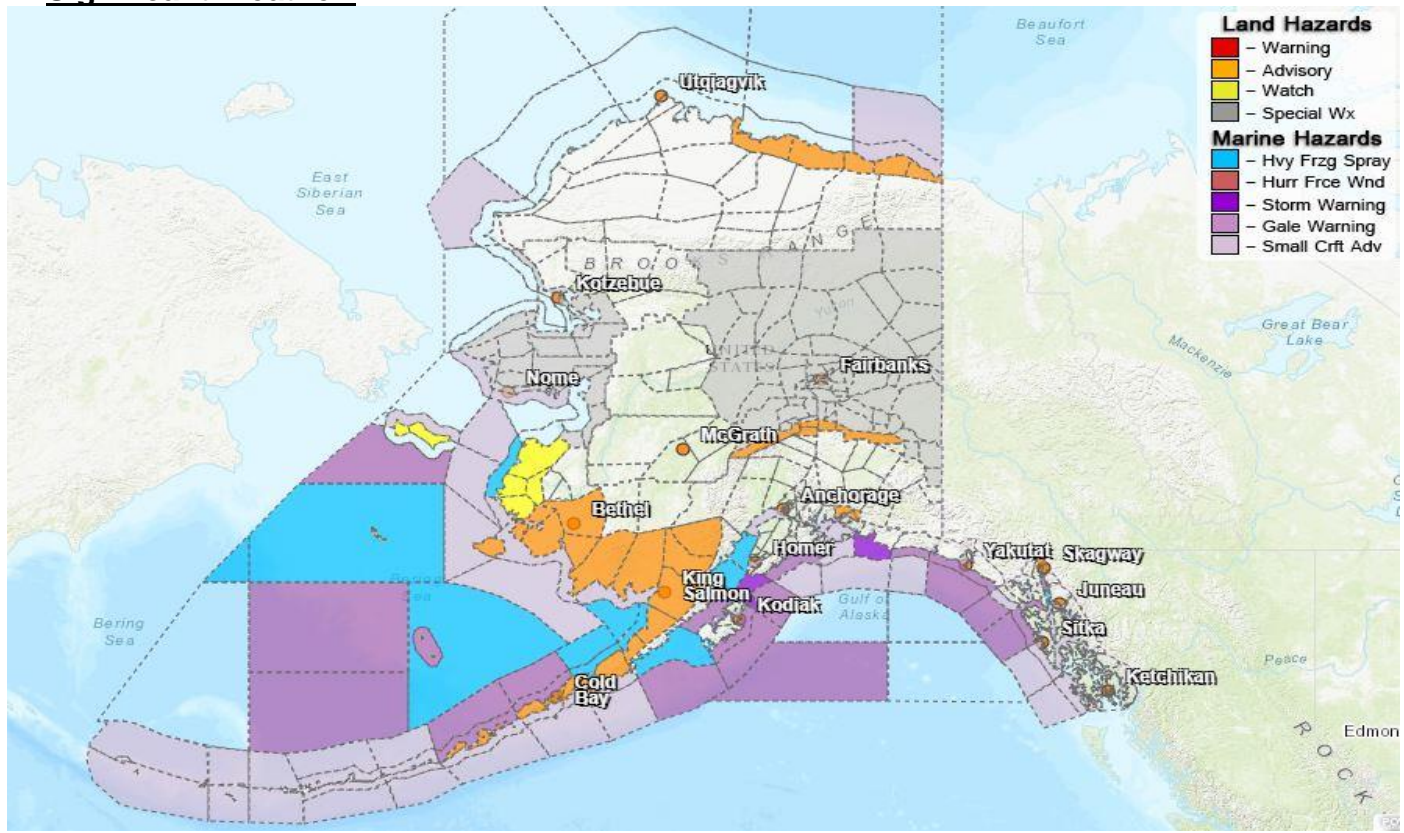
Turnagain Pass – Moderate above 1000 ft, Low below 1,000ft.

Valdez – Considerable above 2000 Moderate below 2000ft.

Haines – Low below 1500ft, Moderate 1500 – 2500ft, Considerable above 2500ft

For more information and the most current avalanche conditions, go to <https://alaskasnow.org>

Significant Weather:



Special Weather Statement

- **Kivalina and Red Dog Dock; Lower Kobuk Valley; Baldwin Peninsula; Northern Seward Peninsula; Shishmaref; Bering Strait Coast; Southern Seward Peninsula Coast; Interior Seward Peninsula; Eastern Norton Sound and Nulato Hills** – Starting Saturday

Winter Storm Watch

- **Yukon Delta Coast; St Lawrence Island** - Starting Saturday morning through Sunday.

Winter Weather Advisory

- **Eastern Alaska Range South of Trims Camp** – Until 3am Saturday
- **Pribilof Islands** – Into Friday night.
- **Alaska Peninsula** – Until 3pm Saturday.
- **Kuskokwim Delta, Bristol Bay** – Until 10am Saturday.

Wind Chill Advisory

- **Southern Denali Borough** – Until 3am Saturday.
- **Northeast Prince William Sound** - Until noon Sunday.

Special Weather Statement

- **South Slopes Of The Eastern Brooks Range; South Slopes Of The Central Brooks Range; Upper Koyukuk Valley; Dalton Highway Summits; Yukon Flats; White Mountains and High Terrain South of the Yukon River; Fortymile Country; Upper Tanana Valley; Delta Junction; Upper Chena River Valley; Tanana Flats; Eielson AFB and Salcha; Goldstream Valley and Nenana Hills; Chatanika River Valley; Two Rivers; Fairbanks Metro Area; Nenana; Central Interior; Northern Denali Borough; Southern Denali Borough; Eastern Alaska Range North of Trims Camp; Eastern Alaska Range South of Trims Camp** – Very Cold Across Interior Alaska Through The Weekend.

For more information and the most current weather, Watches / Warnings / Advisories go to:
<https://www.weather.gov/arh/>

The Next Situation Report will be **March 4, 2024**. A significant change in the situation or the threat level will prompt an interim report. This report is posted on the internet at
<https://ready.alaska.gov/sitrep>.

To register for email distribution, go to <http://list.state.ak.us/mailman/listinfo/dhsem.situation.report>.
Direct questions regarding this report to the SEOC at 907-428-7100 or seoc@alaska.gov.